

Wall-mounted shower mixer, no fittings, for fixed showers

EH.3521_I-150

Single-lever basin mixer for water distribution systems type 1 for bathrooms.



Serial Nr.	L1±5 (mm)	L2±5 (mm)	L±15 (mm)	DMOC
482229	130	40	150	48.60 €

Price / VAT exclusive (Price may be changed)

Description

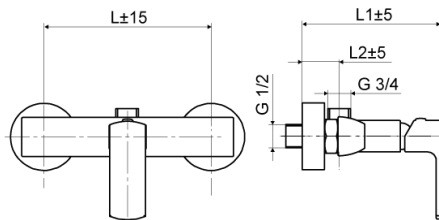
- Brass product, visible parts of Ni-Cr surface treatment
- Lever - zinc alloy with Ni-Cr surface treatment
- Ceramic inserts in mixer cartridge - aluminium oxide Al₂O₃
- Plastic components + sealing components - temperature and pressure resistant materials (operating values)

Technical Parameters

Media type	water
Material	brass CW 617N
Maximum Medium Temperature	70°C
Surface treatment	Ni-Cr
Pressure range	0,05 MPa - 1 MPa

Logistic information

Amount pcs/box	1
Bulk packing	10
Weight (piece) kg	1,33
Weight (package) kg	13,36



Spare parts



3510KN

Cartridge low ø35 mm